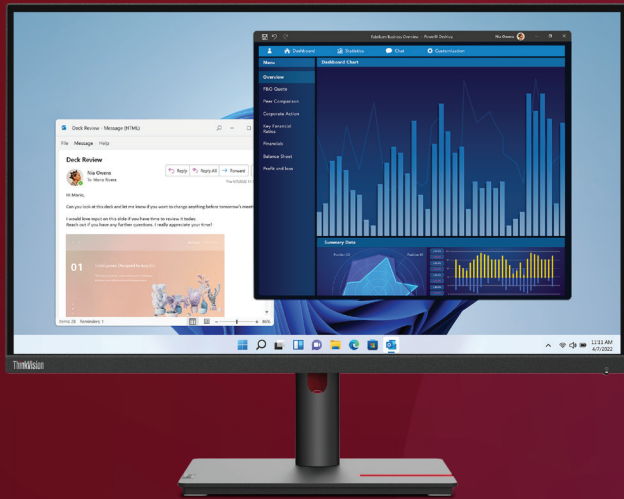


ThinkVision T27p-30



Brilliantly business-like

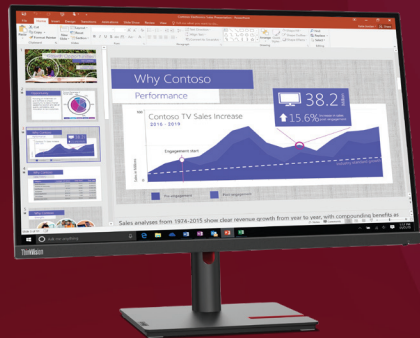
A dominant display for the workplace

While processing power is important, the ability to see your work clearly and in detail is just as important. The right display can make or break your work, especially if you're keeping track of multiple things at once. Data and financial analysts, creative professionals, and developers all depend on having robust displays that display their efforts accurately every time. ThinkVision T27p-30 ticks all those boxes. Made to deliver near-perfect visual experiences, it is also a highly ergonomic device made with the user in mind. It goes above and beyond with a wide range of ports for highly practical connectivity. The incredibly thin bezel on its 3-side NearEdgeless design makes adding multiple monitors a breeze. Its incredible Ultra HD resolution (3840 x 2160), when paired with In-Plane Switching and wide viewing angle delivers impressive visual clarity. Its Natural Low Blue Light Technology paired with TÜV Rheinland Eye Comfort certified technology immensely reduces eye fatigue while displaying without color distortion. Multiple ports such as HDMI 2.0 and Display Port 1.4 make cross-device connectivity as plug-and-play as possible.

Smarter technology for all

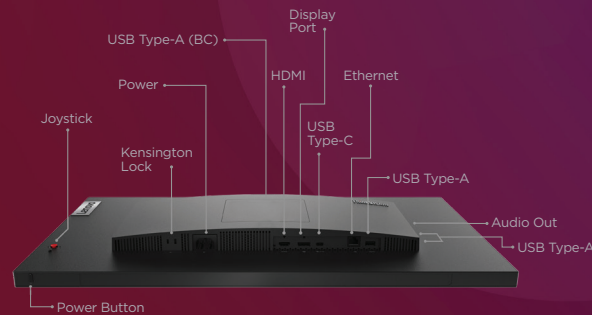
Lenovo

Features of ThinkVision T27p-30 monitor



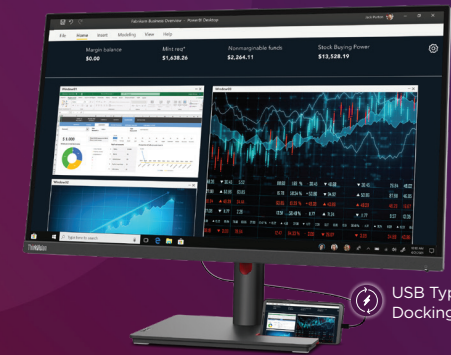
Distraction-free clarity

Most work today is highly visual, regardless of whether it's content creation or not. Data analysts, coders, financial traders, architects – everyone in these occupations – and more besides, need to see what they're doing. The display quality makes a huge difference as well, and in some cases, helps identify and correct errors that could have serious consequences. The ThinkVision T27p-30 offers crystal-clear clarity and 4K resolution (3840 x 2160). In-Plane Switching ensures consistent visual clarity. The narrow bezel design and multiple ports allow connecting multiple monitors for better versatility and more screen space.



Versatile connectivity

Having a versatile system that handles multiple tasks at once is a blessing. A monitor is a big part of that too, and the right one makes the most complex of tasks a breeze to handle. ThinkVision T27p-30 is armed with a host of ports designed for convenience. The USB-C Gen2 and Display Port allow users to string multiple monitors together. The HDMI 2.0 brings seamless high-definition connectivity to life, and the RJ45 port allows a direct network connection. The audio-out can be used to connect a speaker or headset.



Considerate design

Long hours in front of a monitor are almost guaranteed, no matter what you do. Employees on average spend at least 6 hours in front of a screen, sometimes more. So, user comfort, both in terms of ergonomics and reduced eye strain is vital. The monitor's Natural Low Blue Light technology and TÜV Rheinland Eye Comfort certified technology care for your eyes without affecting color accuracy. ThinkVision T27p-30 comes with a host of features that provide a comfortable user experience in every way. Its stand rises to 155mm to accommodate different heights and work modes, and a wider 23.5° tilt. ThinkVision T27p-30 is also incredibly good at using less space. Its smaller base means it can be pushed closer to the edge. The built-in phone rack is a convenient place to always keep your phone in sight – so you never miss a message or call.

ThinkVision T27p-30

DISPLAY

Panel Size
27-inch

Screen Dimensions
608.8 mm x 355.3 mm

Panel Type
3-side NearEdgeless
In-Plane Switching

Active Area
596.7 mm x 335.7 mm

Curvature
Flat Panel

Backlight
WLED

Aspect Ratio
16:9

Resolution
3840 x 2160

Pixel Pitch
0.155 mm x 0.155 mm

Dot/Pixel Per Inch (DPI/PPI)
163 DPI

Viewing Angle (H x V @ CR 10:1)
178° / 178°

Response Time
6ms (Normal Mode),
4ms (Extreme Mode)

Refresh Rate
60Hz

Brightness (Typical)
350 cd/m²

Contrast Ratio (Typical)
1300:1

Dynamic Contrast Ratio (Typical)
3M:1

Color Gamut (Coverage Ratio)
99% sRGB

Color Support (Typical)
1.07 Billion

Color Depth
10-bit (8-bit + A-FRC)

Anti-glare
Yes

CONNECTIVITY

Video Signal
1 x USB Type-C¹ (DP 1.4 32.4 Gbps for 4 lanes Alt Mode)
1 x HDMI 2.0
1 x DP 1.4

Audio Signal
1 x Audio Out (3.5 mm)

USB Hub
Yes

Ethernet
Yes (10M/100M/1000M)
1 x RJ45

USB Upstream
1 x USB 3.2 Gen 1² Type-C¹

USB Downstream
3 x USB 3.2 Gen 1² Type-A
1 x USB 3.2 Gen 1² Type-A (1 x BC1.2)

MULTIMEDIA

Modular Camera/Speaker Support
Yes (Optional Support³)

POWER

Power Consumption (Typ. / Max)
35W / 165W

Power Consumption (Sleep / Off Mode)
<0.5W

Power Consumption (Switch Off Mode)
<0.3W

ENERGYSTAR[®] Power Consumption (Pon / ETEC)
29W / 91kWh

Power Supply
Internal

USB Type-C¹ (DP Alt Mode) Power Delivery
Up to 90W⁴

Smart Power
Yes

Voltage Required
AC 100 to 240 V (50-60Hz)

MECHANICAL

Tilt Angle (Front / Back)
-5° / 23.5°

Swivel Angle (Left / Right)
-45° / 45°

Lift (Max. Range)
155 mm

Pivot
-90° / 90°

VESA Mount Capability
Yes (100 x 100 mm)

ThinkCentre M Series Tiny Support
Yes, by Tiny Clamp Bracket
Mounting Kit III (PN: 4XF1K72399)⁵

Kensington Lock Slot
Yes (2.5 mm x 6 mm and 3 mm x 7 mm)

Cable Management
Yes

Bezel Color
Raven Black

Bezel Width (Side)
2.0 mm

Bezel Width (Top/Bottom)
2.0 mm / 18.0 mm

DIMENSIONS

Size Packed (D x H x W) (mm/inch)
148.0 x 525.0 x 690.0 mm
5.83 x 20.67 x 27.17 inches

Size Unpacked w/ Stand (D x H x W) (mm/inch) (Highest Position)
204.5 x 545.4 x 613.6 mm
8.05 x 21.47 x 24.16 inches

Size Unpacked w/ Stand (D x H x W) (mm/inch) (Lowest Position)
204.5 x 390.4 x 613.6 mm
8.05 x 15.37 x 24.16 inches

Size Unpacked w/o Stand (Head Only) (D x H x W) (mm/inch)
50.0 x 363.5 x 613.6 mm
1.97 x 14.31 x 24.16 inches

Weight Packed (kg / lbs.)
10.4 kg / 22.9 lbs.

Weight Unpacked (kg / lbs.)
7.3 kg / 16.2 lbs.

Unpacked Weight (Monitor Head Only) (kg / lbs.)
5.3 kg / 11.7 lbs.

WHAT'S IN THE BOX

Monitor with Stand
Yes

Power Cable (Cable Length)
1 x Power Cable (1.8m)

DP Cable (Cable Length)
1 x DP Cable (1.8m) for
NA: North America, Brazil & PRC
Workstation

HDMI Cable
1 x HDMI Cable for PRC Standalone only

USB Cable (Cable Length)
1 x USB Type-C¹ to Type-A Cable (1.8m)
for NA: North America & Brazil
1 x USB Type-C¹ Cable (1m)

CERTIFICATION

ENERGY STAR[®]
8.0

CCC
Yes

TCO
9.0

TCO Edge
2.0

EPEAT
Gold

RoHS (EU 2011/65/EU)
Yes

Windows Certification
Windows 10, Windows 11

China Energy Efficiency Standard
Tier 2

TÜV Rheinland Eye Comfort
Yes

TÜV Rheinland Low Blue Light (Hardware Solution)
Yes

TÜV Rheinland Flicker Free
Yes

Eyesafe Display Certifications
Yes (Eyesafe 2.0)



¹ USB Type-C[®] and USB-C[®] are registered trademarks of USB Implementers Forum. | ² Depending on many factors such as the processing capability of peripheral devices, file attributes, and other factors related to system configuration and operating environments, the actual transfer rate using the various USB connectors on this device will vary and is typically slower than the data rates as defined by the respective USB specifications: 5 Gbit/s for USB 3.2 Gen 1; 10 Gbit/s for USB 3.2 Gen 2 & 20 Gbit/s for USB 3.2 Gen2x2. | ³ Compatible with ThinkVision VoIP Stack MC60 Monitor Webcam and MS30 Monitor Soundbar. | ⁴ Listed as maximum capacity of power delivery. Actual capacity of power delivery may vary depending upon devices connected or monitor configuration, and may decline with downstream USB ports connected or higher brightness setting. | ⁵ Sold separately.

© 2023 Lenovo. All rights reserved. These products are available while supplies last. Prices shown are subject to change without notice. For any questions concerning price, please contact your Lenovo Account Executive. Lenovo is not responsible for photographic or typographic errors. Warranty: For a copy of applicable warranties, write to: Warranty Information, 500 Park Offices Drive, RTP, NC 27709, U.S.A, Attn: Dept. ZPYA/B600. Lenovo makes no representation or warranty regarding third-party products or services. Trademarks: Lenovo, the Lenovo logo, Rescue and Recovery, ThinkPad, ThinkCentre, ThinkStation, ThinkVantage, ThinkVision, and ThinkColour are trademarks or registered trademarks of Lenovo. Microsoft, Windows, and Vista are registered trademarks of Microsoft Corporation. Intel, the Intel logo, Intel Inside, Intel Core, and Core Inside are trademarks of Intel Corporation in the U.S. and/or other countries. Other company, product, and service names may be trademarks or service marks of others.

Specifications may vary depending upon region.