

## PERFORMANCE

### Processor

AMD Ryzen™ 9 PRO 7940HS (8C / 16T, 4.0 / 5.2GHz, 8MB L2 / 16MB L3)

### Graphics

NVIDIA® RTX 2000 Ada Generation 8GB GDDR6

### Chipset

AMD SoC Platform

### Memory

2x 32GB SO-DIMM DDR5-5600 Non-ECC

### Memory Slots

Two DDR5 SO-DIMM slots, dual-channel capable

### Max Memory

Up to 64GB (2x 32GB DDR5 SO-DIMM)

### Storage

2TB SSD M.2 2280 PCIe® 4.0x4 Performance NVMe® Opal 2.0

### Storage Support<sup>[1]</sup>

Up to two drives, 2x M.2 SSD

- M.2 2280 SSD up to 4TB, 2TB each

### Storage Slot

Two M.2 2280 PCIe® 4.0 x4 slots

### Card Reader

SD 7.0 Card Reader

### Audio Chip

High Definition (HD) Audio, Realtek® ALC3287 codec

### Speakers

Stereo speakers, 2W x2, Dolby® Audio™

### Camera

5.0MP + IR with Privacy Shutter and Human Presence Detection

### Microphone

2x, Array

### Battery

Integrated 90Wh

### Power Adapter

170W Slim Tip (3-pin)

## DESIGN

### Display<sup>[2]</sup>

16" WQXGA (3840x2400) IPS 800nits Anti-glare, 100% DCI-P3, DisplayHDR™ 400, Dolby® Vision®, Eyesafe®

### Color Calibration

Factory Color Calibration

### Keyboard

Backlit, German

### Case Color

Thunder Black

### Case Material

PC-ABS (Top), PC-ABS (Bottom)

### Pen

No Support

### Dimensions (WxDxH)<sup>[3]</sup>

365 x 262 x 24.66 mm (14.37 x 10.32 x 0.97 inches)

### Weight<sup>[4]</sup>

Starting at 2.2 kg (4.85 lbs)

## SOFTWARE

### Operating System

Windows® 11 Pro, German

## CONNECTIVITY

### Ethernet

No Onboard Ethernet

### WLAN + Bluetooth<sup>[5]</sup>

Qualcomm® Wi-Fi® 6E NFA725A, 11ax 2x2 + BT5.3

### WWAN

WWAN Upgradable to 4G

### Standard Ports<sup>[6]</sup>

- 2x USB 3.2 Gen 1 (one Always On)
- 2x USB4® 40Gbps (support data transfer, Power Delivery 3.0 and DisplayPort™ 1.4)
- 1x HDMI® 2.1, up to 8K/60Hz
- 1x Headphone / microphone combo jack (3.5mm)
- 1x SD Express 7.0 card reader
- 1x Security keyhole

### Optional Ports (configured)

1x Nano-SIM Card Slot

### Docking

Various docking solutions supported via Thunderbolt™ or USB-C®.

For more compatible docking solutions, please visit .

[Docking for ThinkPad® P16v Gen 1 \(AMD\)](#)

## SECURITY & PRIVACY

### Security Chip

Microsoft® Pluton TPM 2.0 Enabled

### Fingerprint Reader

Touch Style, Match-on-Chip, Integrated in Power Button

### Physical Locks

Kensington® Nano Security Slot™, 2.5 x 6 mm

### Other Security

- IR camera for Windows® Hello (facial recognition)
- Ultrasonic Human Presence Detection for IR camera
- Camera privacy shutter
- Bottom cover tamper detection

## MANAGEABILITY

### System Management

AMD PRO Manageability 2.0

## SERVICE

### Base Warranty

3-year, Courier or Carry-in

### Included Upgrade

CO2 Offset 0.5 ton, 3Y Premier Support Upgrade from 3Y Courier/Carry-In WHB(CPN)

## CERTIFICATIONS

### Green Certifications<sup>[7]</sup>

- ENERGY STAR® 8.0
- EPEAT™ Gold Registered
- RoHS compliant
- TCO Certified 9.0

### Other Certifications

- Eyesafe® Certified
- TÜV Rheinland® Low Blue Light

### Mil-Spec Test

MIL-STD-810H military test passed

### ISV Certifications

Please visit [ISV certifications for Lenovo® Workstations](#)

## MODEL

**TopSeller** : Yes **Announce Date** : 2024-01-16  
**EAN / UPC / JAN** : 0197530274305 **End of Support** : 2030-02-25

Note:

<sup>[1]</sup> The storage capacity supported is based on the test results with current Lenovo storage offerings.

<sup>[2]</sup> IPS (in-plane switching) technology may refer to IPS, PLS, ADS, AHVA, AAS.

<sup>[3]</sup> The system dimensions may vary depending on configurations.

<sup>[4]</sup> The system weight is approximate and based on results in Lenovo lab, which varies depending on the source of component, variance of the distribution of each component, and manufacturing process. It may not be the exact weight for each specific model.

<sup>[5]</sup> Wi-Fi 6E full features might be limited by country-level.....

· Lenovo reserves the right to change specifications without notice.

To see more note information, please link to

<https://psref.lenovo.com/Detail/2342?M=21FE0031GE>

## Premier Support - A direct 24x7x365 line to our most elite technicians.



Advanced technical support, 24x7x365, in more than 100 markets



Technical Account Managers for proactive relationship and escalation management



Comprehensive hardware & OEM software support



Priority on service delivery and repair parts



Single point of contact for simplified end-to-end case management



Lenovo Service Connect Portal for customized reporting and product support

## Accidental Damage Protection - Protection of your PC from the unexpected.

Experience shows that a significant portion of devices may be damaged (and not covered under warranty) in the first three years. Lenovo's Accidental Damage Protection service covers accidents beyond the system warranty such as drops, spills, bumps and even electrical surges. Make sure your new device has maximum protection, avoid unplanned costs and get peace of mind.

## Base Warranty - Included with the systems you purchase, default 1- or 3-year coverage window.

## Warranty Extensions & Upgrades - Service and protection that's right for your circumstances.

- Pick Up & Return Courier
- Onsite Support
- Technician Installed Customer
- Replaceable Unit Service
- International Warranty Upgrade

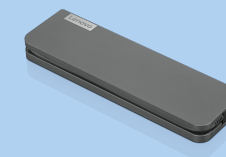
Lenovo may not offer the products, services or features discussed in this document in all regions. Lenovo may withdraw an offering at any time. Information is subject to change without notice. Consult your local representative for information on offerings available in your area. Lenovo reserves the right to change specifications or other product information without notice. Lenovo is not responsible for photographic or typographical errors. Lenovo provides this publication "as is" without warranty of any kind, either express or implied, including the implied warranties of merchantability or fitness for a particular purpose.

## Recommended Accessories

### ThinkPad Hybrid USB-C with USB-A Dock (American Standard Plug Type B)

40AF0135US

- The ThinkPad Hybrid USB-C with USB-A dock is a productivity solution for any USB-C or USB-A laptop, including non-Lenovo laptops from Dell, HP, and Apple, providing power, display, and port expansion in any m...



### Lenovo USB-C Mini Dock\_US

40AU0065US

Expand Your Potential with An Universal Mini Dock; Lenovo understands that modern business depends on a wide variety of PC's and even brands to meet their business needs. To make this easier Lenovo USB-C Mini dock is ...

For a full list of accessories and services, please visit:  
<https://smartfind.Lenovo.com>

Lenovo

PSREF  
Product Specifications  
Reference